

Are all settlements the same?

Year 3. Term 6



Key geographical concepts

- Human and physical geography
- Location
- Place



Key learning

- Villages are small settlements, usually located in rural areas. Towns are larger than villages. They have a greater range of buildings and services, including many houses, a primary and secondary school, and sometimes shopping centres and train stations. Cities are the largest type of settlement. They are densely populated with many buildings, such as hospitals, universities, offices and sports facilities.
- New Delhi became the capital of India. In 1911, King George V of Britain decided that British India's capital would be moved to Delhi from Kolkata (previously known as Calcutta). In 1912, the construction of the capital, named New Delhi, began about five kilometres south of what was the Delhi city centre. New Delhi formally became the capital of



Key vocabulary

Agricultural land	Bare land used for agriculture
Capital city	The municipality holding primary status in a country, state, province or department.
Commercial land	Land suitable for wholesale or retail businesses.
County	A territorial division of some countries
Dispersed	Widely spread
Facilities	A place, especially building where a particular activity happens
Land use	How society uses and modifies the land to suit its needs
Linear	On a line
Local	Restricted to a particular area or one's neighbourhood
Nucleated	Buildings closely grouped together
Recreational land	Land used for purposes of recreation for example sports fields, gymnasiums, playgrounds, parks...
Settlement	A place where people establish a community

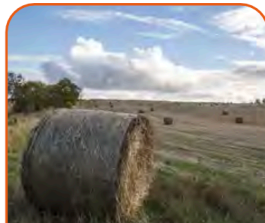
Land use How communities use land.



residential land
Land used for houses and apartment blocks.



transportation
A way of getting something from one place to another.



agricultural land
Land used for farming, cattle and crops.



commercial land
Land used for buildings aimed at making money.



recreational land
Land which has buildings providing fun activities.



Big Ideas - Our Learning Journey

Reception
Environment - Outdoor adventures
Settlement - Exploring maps

Year 1/2
Environment - Coasts, Hot and Cold Places, Wonderful World
Settlement - Coasts, Hot and Cold Places

Year 3/4
Environment - Megacities, Local Area study, Rainforests, Earthquakes
Settlement - Megacities, Local Area study

Year 5/6
Environment - Rivers, Oceans, Deserts
Settlement - Population, Country Survival, Deserts



Ethics

Should we be allowed to create settlements on a National Nature Reserve?