

Alive (structure and function) Year 3

How do some plants and animals stand up?

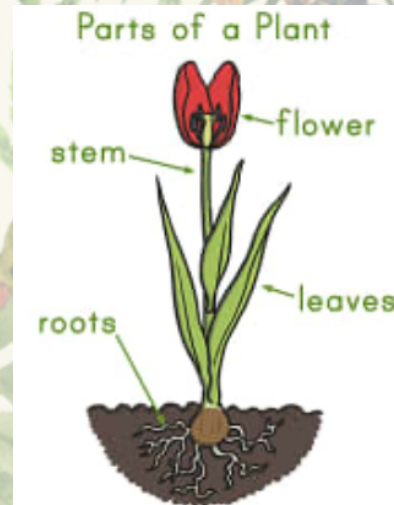
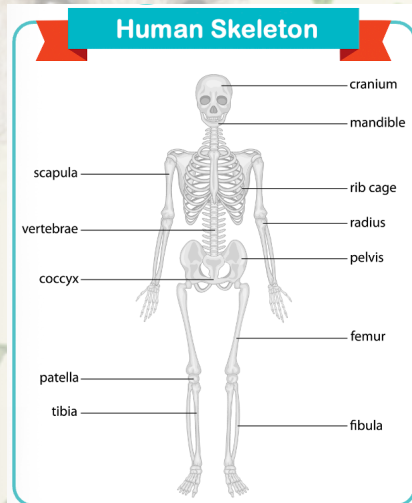
Key scientist – Alice Roberts

Alice Roberts is a biological anthropologist who explores human anatomy, including muscles and skeletons, and shares her discoveries through books and television programs.



Key learning

- Know that humans and animals have skeletons to protect their vital organs, provide support and allow movement.
- Know that humans and animals have muscles which work in pairs to allow movement.
- Know that a stem/ trunk provides support.
- Know that the spine holds up the upper part of the human body up, the skull protects the brain and the ribcage protects the heart and lungs.
- Know that bones are able to move because of joints.
- Know that different animal skeletons have different structures and functions.
- Know that the roots and stem/trunk of a plant provide support and keep it upright.



Key vocabulary

stem	The stem supports the leaves and flowers of a plant
biceps	Muscles found in the upper arm.
roots	The part of the plant that anchors it in the soil and absorbs water and nutrients.
endoskeleton	animals with skeletons inside their body.
exoskeleton	animals with skeletons outside their body.
photosynthesis	The process by which green plants turn carbon dioxide and water into food using energy from the sun.
reproduce	To make a new living thing of the same kind.
trunk	The thick main stem of a tree.
hydrostatic skeleton	soft bodied animals with no bones.
invertebrate	animals without a backbone, or spine.
muscle	Tissue that moves parts of the body.
petal	The delicate, colourful part of a flower.
leaf	The flat, green part of a plant.
rib cage	The structure of bones protecting the lungs and heart.
skull	The structure of bones protecting the brain.
spine	The structure of bones that run up the centre back.
vertebrate	Animals with a backbone or spine.
chlorophyll	The green substance in plants that takes in light from the sun to help them grow.

Working scientifically concepts



Recording data



Observing and measuring



Alive (Structure and Function) – Our Learning Journey

Year 1

- Animal body parts & types of animals
- Identifying trees and plants

Year 2

- Observing how plants grow

Year 4

- The digestive system

Year 5

- How humans change while they grow

Year 6

- Circulatory system
- Classifying plants and animals

